

Software Specification

Device Management

- Remote Assistance: Remote Desktop and Remote Diagnostics.
- Lock/UnLock/Restart/Reset.
- List all hardware capabilities (model dependent).
- Supported capabilities: GPS, Bluetooth, WLAN, WWAN, Internal/External Memory, Storage, CPU, Battery, Touch Panel, Camera, Keyboard, USB, Barcode Scanner, New Capabilities from Future Models.
- Enable/Disable capabilities.

Application Management

- Install/Uninstall/Upgrade/Active/Inactive Applications.
- Firmware Upgrade: OS Image, Boot Loader, Logo, Agent.
- Retrieve List of Installed Apps on a device.
- List Apps that are running.
- Allow or disallow user to install apps on devices.
- Schedule the task at a specified date & time.

Backup Management

- Upload OS image, Bootloader, Logo, Agent.
- Backup/Restore/Delete File and Folder.
- Backup/Restore System File and Folder (OS dependent).
- Schedule the task at a specified date & time.

Configuration Management

- Edit configuration script.
- Run configuration script immediately or as scheduled.
- Lock device with specific configuration and trigger an alert if configuration is tampered.
- List setting compliance status.

Location Management

- Track Device Location on Google or Baidu Map.
- Playback track, track zoom level adjustment.
- Set up Geofence Areas and Alerts.

Device Data Collection

- Device and IP information.
- Hardware capability data collection.
- Application inventory collection.
- Event trigger.

Account Management

- Manage Users/Roles.
- Account Preferences: DND Hours, Time Zone, temperature Unit.
- Roles can define access permissions to system functions.

Group Management

- Manage a group of devices all at once.
- Supported tasks: Application Management, Backup Management, Configuration Management, Device Management, Location Management, and Notification Management.
- List of Group Events.

Reports and Dashboards

- Overview of AM, BM, CM, and DM Tasks.
- Overview of Tasks, Events, Alerts, Logs.
- Logging for Event/Alert/Task/Tamper/User/System.
- Reports for Event/Alert/Task/Device/Geofence.
- Customize reports period from 1 to 12 weeks.
- Support export as Spreadsheet.

Device Management APIs

- More than 330 RESTful API interfaces for device management.
- Using JSON to transfer to/from MoboLink.
- Supports HTTP and HTTPS.

IoT Data Hub

- Manage system projects and solutions.
- RESTful API interfaces: Probe Data API, X Data API, Event API, Messaging API.
- Collects probe data from devices or sensors.
- Real-time event engine to trigger notifications as desired.
- Message queue to deliver messages between devices and application systems.
- General purpose data exchange hub to exchange customizable data between application systems.
- Supports HTTP and HTTPS.

unitech
because we care

MoboLink 3.1
Hyperlink to your mobile devices

MoboLink unites and keeps track of all of your devices securely so you can keep your company running full steam ahead.



www.ute.com
© 2019 unitech Electronics Co., Ltd.
All rights reserved. (201902)



unitech
because we care

unitech has been helping our partners successfully move from paper to electronic data collection. Nowadays, IT managers often have to deal with lots of devices and a huge amount of digital data. Again, we challenged ourselves to help our partners to transform digitally into the IoT era and MoboLink is the answer. MoboLink is an IoT Platform that enables Device Management and IoT Data Hub.

The Device Manager safe-guards your most valuable mobile assets and streamline the device hardware and software provisioning processes, so you can focus more on your business profit making, and less on device troubleshooting. Device Management feature is equipped with comprehensive REST APIs for integrating MDM features with your business systems. MoboLink takes care of the complexity of data transportation and storage so developers only need to focus on the business logistics and increasing overall efficiency.

The MoboLink IoT Data Hub consists of a Data Collection, Data Exchange, Real-time Event Engine, and efficient cloud computing software components. It also offers set of RESTful API interfaces to the developers for device data collecting, application data exchanging, complex event trigger processing, and messaging. Both IT Managers and system integrator can collect data and gain broader insight from data history so that it is easier to make forecast and the right business decisions.

Application Management

Devices Applications and Firmware can be managed individually or as a group. When an application/firmware needs to be installed or upgraded, administrators can schedule the application/firmware pushed to all devices at one touch of the screen. Administrators can even remotely command devices to run an application immediately or schedule at a specified date time. Furthermore Application White List can be enabled or disabled to enforce corporate security compliances.

Backup Management

With Backup Management, you may backup important files or the entire folder and its contents from all your devices with just a few clicks. Restoring files and folders back to a device is as easy as backup. You will also have the options to restore files to a group of devices all at once.

Configuration Management

Configuration Management is a remote device auto configuration tool that simplifies the device setup process. Multiple configuration groups can be created to allow different configurations for different enterprise functions. When a device is assigned to a particular configuration group, the device will start auto configuring itself to meet the required configurations. You may also lock the settings and receive tamper notifications. Tampered configurations can be reverted back automatically.

Device Management

MoboLink Device Management is based on the industrial proven OMA-DM standard. Devices status can be monitored and controlled in real-time in a secured environment through the Web-based Management Portal. When a device is lost, administrators can also Lock and Wipe device information all at once, and device's last location and connection time can be tracked. When using a hardware manufactured by Unitech, the device features are controlled at the driver level to minimize security concerns with system tampering. When a device develops issues that the user could not resolve, help desk can help troubleshooting by "remote desktop" into the device to immediately fixed issues.

Location Management

Administrators can track the locations of devices by looking them up on the map, and playback the path to understand the movement of your assets. He can also define geofence areas so that when a device goes into and/or out of the areas, an alert notification can be raised.

Notification Management

Events triggers can be set up on devices and they are monitored in real-time. When a device determines that it meets the trigger condition, it will notify the system immediately. On the other hand, more complex trigger conditions using logical operands can be defined as Alerts. When events or alerts are triggered, not only they will notify as pop-up dialog on the web user interface, they are also being logged and may support e-mail notifications.

Web-based Management Portal

Administrators can remote manage their devices using the web-based management portal, which provides dashboard showing task status and event notifications at a glance, and also provides logs and reporting tools to help administrators check device usability or analyze issues.

Device Management REST APIs

The Device Manager opens all its functions through REST APIs. System integrators will be able to create a custom MDM portal, or integrate MoboLink functions with other enterprise system solutions. The APIs offer the interaction with the Device Manager functions such as monitor and control unitech devices, deployment of applications and firmware, backup and restore of files and folders, management of configurations, track and geofence of device locations, and so forth.

Flexible Licensing Options

MoboLink's flexible licensing options not only allow you to choose between on-premises installation or unitech's MoboLink cloud subscription service, the individual features are provided as add-on's so that you can enroll only to the features that your enterprise needed and may be expanded to more features in the future as required.

Supported Devices

MoboLink agents are built into unitech mobile devices such as HT1, HT682, PA692, PA692A, PA700, PA720, PA726, PA730, PA820, TB120, and TB128. We will continue to add support for more unitech devices, so that you can easily start managing your devices remotely straight away.



Device Management

- Compliant with International Standard OMA-DM
- Easy management of mobile devices from anywhere



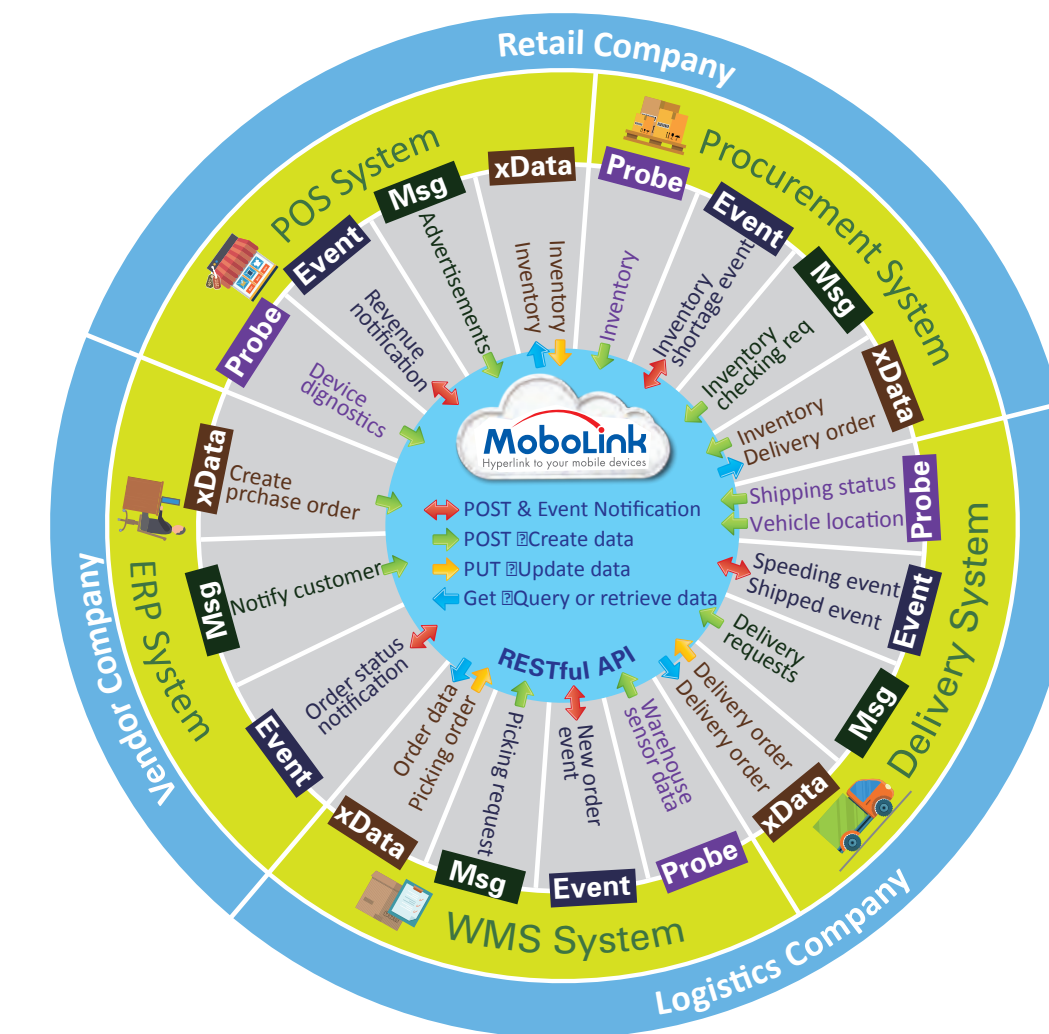
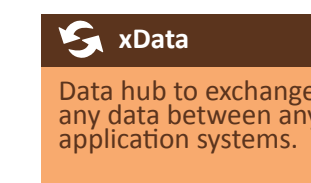
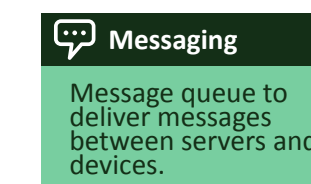
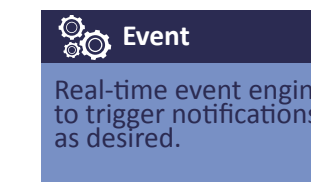
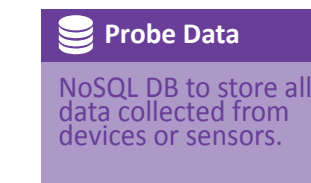
IoT Data Hub

- Scalable NoSQL DB for cross-system data exchange
- Flexible event rule definition
- Ability to deliver messages between servers and devices



350+ RESTful APIs

- IoT Data Hub APIs
- Device Management APIs



IoT Data Hub APIs

- Probe Data API** : Allow devices to report their probe data to server, and different systems can make use of data for different purposes. (e.g. vehicle data used by TMS & HRM differently)
- Event API** : If a system is interested in a piece of data field inside a Probe Data or X Data reported by devices/systems, it can register an event trigger rule to listen on it.
- Messaging API** : Two-way messaging between devices and systems, much like SMS.
- xData API** : A set of General purpose data exchange APIs allowing devices and systems across vertical domains to exchange data. (e.g. personal medical records can be exchanged across different HIS systems and insurance systems)