



# White paper

Yieh Phui Enterprise Co., Ltd.

Date: July 2018

## **Executive Summary**

MoboLink is unitech IoT platform to manage and control unitech's electronic devices. Nowadays device management solution is highly needed in various disciplines such as enterprise, retailer, distribution, manufacturer, and many more to ensure employees stay productive and to reduce stressful maintenance process.

In this white paper we will discuss one case study of MoboLink user, providing readers to know one example on where this solution can be a great assistant.

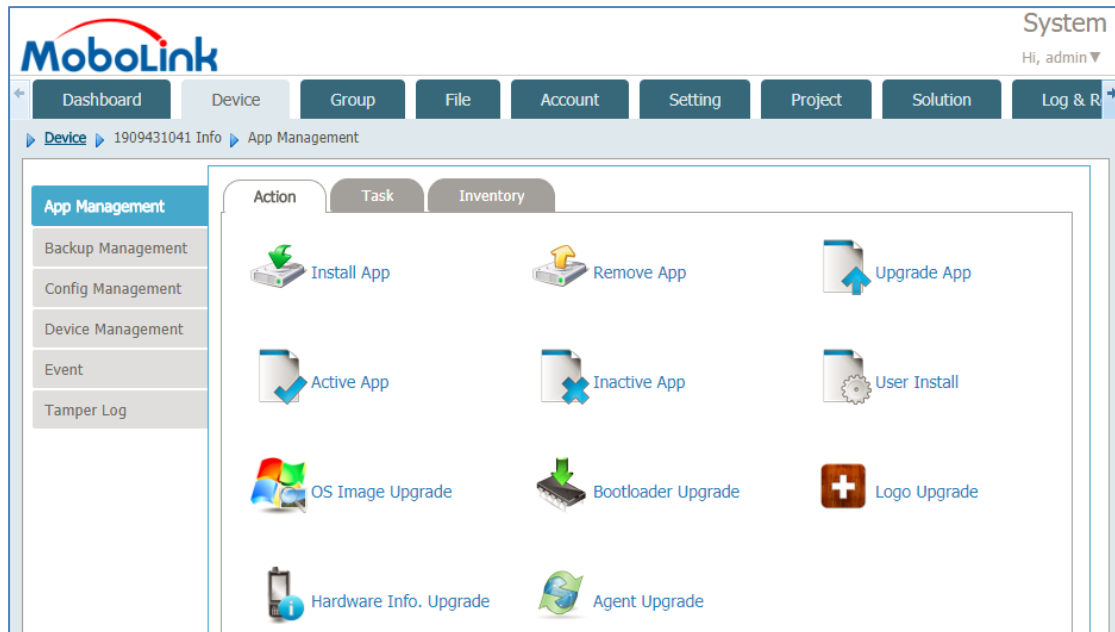
## **Introduction**

MoboLink is an IoT Platform that enables Mobile Device Management and Data Exchange Management in your enterprises. The Device Manager safe-guards valuable mobile assets and streamline the device hardware and software provisioning processes. The MoboLink Data Exchange Manager consists of an IoT Data Hub, Real-time Event Engine, and efficient cloud computing software components. MoboLink also offers a set of RESTful API interfaces for developers to easily integrate MoboLink MDM function with corporate own IoT systems, so that unitech devices can be controlled and also allowing device data collection and data exchange across different systems.

## **Features**

- Device Management
- Application and Firmware Management
- Backup Management
- Configuration Management
- Location Management
- Group Management
- Alert Notifications
- Logs and Reports
- Account Management
- Solution Management

- RESTful Device Management and Data Exchange APIs (Probe Data, X Data, Event, Messaging)



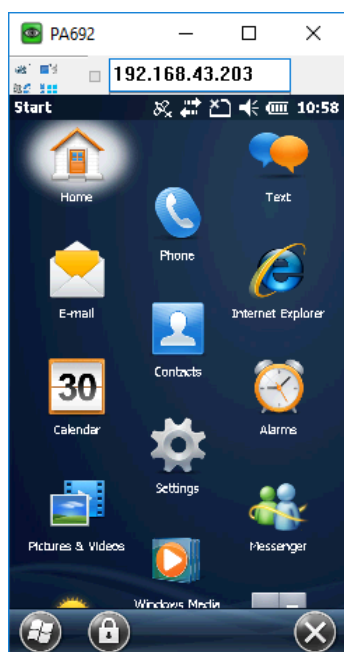
### Yieh Phui Enterprise Co., Ltd.

Yieh Phui Enterprise Co. Ltd. started construction in 1988, specializes in galvanized and prepainted steel coil production. Establishing and managing a manufacturing operation, especially a steel plant, becomes increasingly difficult as land becomes scarcer, wages continue to increase, and society becomes more diversified. In spite of the increase in domestic and international competition, Yieh Phui's maximum annual production capacity of galvanized and prepainted steel products has reached 1,305,000 and 433, 000 metric tonnes in 2003 respectively. Both Yieh Phui and Yieh Phui (China) automated and computerized all of the system and production facilities so that the companies could have the strength to survive in an increasingly competitive market.

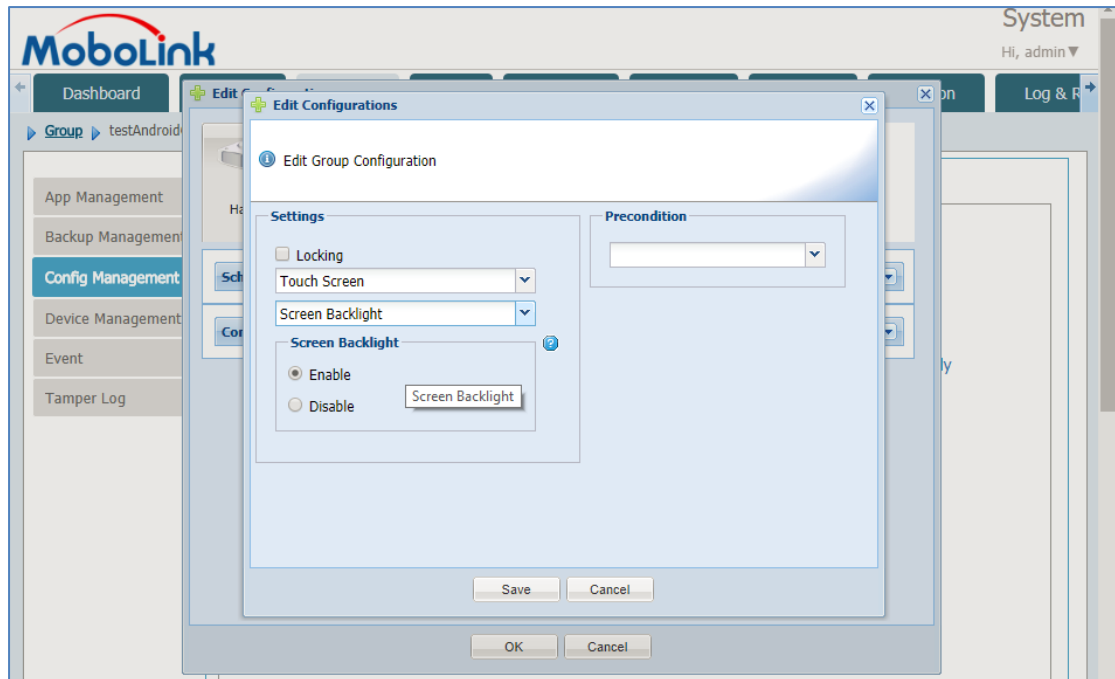
Yieh Phui has developed its own systems for the management of various operations such as Production Management, Quality Management, Sales Management, Administration Management, Financial Management, Equipment Management and Information Security Management, etc. Yieh Phui and Yieh Phui(China) have established a complete, strict and secure information operation environment. High efficiency information protection system such as Firewalls and Viruswalls are used to ensure the security of the business information between customers and them. Yieh Phui has established EIP (Enterprise Information Portal), a collaborative platform that

not only enables staff to retrieve company information and professional knowledge quickly, but also delivers internal messages

Since 2012, Yieh Phui has been using unitech rugged handheld devices for their manufacturing plant in Tainan. And starting from 2017 they have been using MoboLink MDM system to manage unitech devices. Yieh Phui is not only using Windows Mobile/WinCE handheld device such as PA692 and HT682, but it also using Android device such as TB560. Unitech MoboLink MDM system can manage both operating systems without any problem.



MoboLink application management functions, such as install app, activate app, inactive app, and delete app, and also remote desktop feature have been a great help for the inventory and production process. When there is any malfunction device, it will be a troublesome for the station operator to deliver the device to the IT unit for service. Besides of the long distance from the station to the IT administrator office (approximately need 10 to 15 minutes of walking), there are some form that need to be filled to carry equipment for entering or leaving a manufacturing area, also every operator should not leaving their station when the production is ongoing. Using MoboLink MDM solution, administrator control apps, whether it is installing, upgrading, removing or even activate and deactivate from distant location. Moreover, with the remote desktop function supported by unitech devices, the maintenance and repair process can be done remotely and efficiently.



MoboLink also has several other features such as backup management, for transferring files or directory from device to server or vice versa; configuration management, for doing some device configuration including some android settings; and MoboLink REST API, to integrate MoboLink functionality for managing unitech devices into other existing system or to have customized UI design based on customer preferences. These features can help Yieh Phui to have an efficient process with less time and resources by doing all those task remotely from MoboLink.

## Conclusion

Unitech always improves its products and tries to give a better solution for its customer. Through MoboLink solution, users can get benefits from cost saving by reducing the time needed for device application setup and repair mechanism from manual to remotely using MoboLink MDM solution.

To receive more information about MoboLink MDM and Data Exchange solutions please contact your unitech electronics local sales.