



White paper

Kuang Chuan Dairy Co., Ltd.

Date: September 2018

Executive Summary

MoboLink is unitech IoT platform to manage and control unitech's electronic devices. Nowadays device management solution is highly needed in various disciplines such as enterprise, retailer, distribution, manufacturer, and many more to ensure employees stay productive and to reduce stressful maintenance process.

In this white paper we will discuss one case study of MoboLink user, providing readers to know one example on where this solution can be a great assistant.

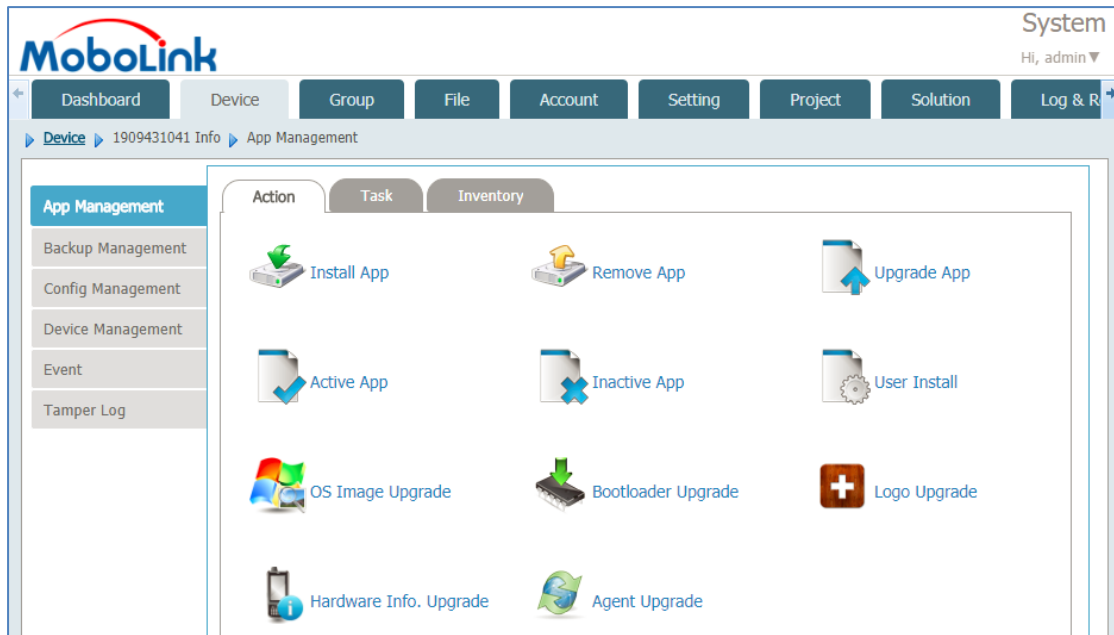
Introduction

MoboLink is an IoT Platform that enables Mobile Device Management and Data Exchange Management in your enterprises. The Device Manager safe-guards valuable mobile assets and streamline the device hardware and software provisioning processes. The MoboLink Data Exchange Manager consists of an IoT Data Hub, Real-time Event Engine, and efficient cloud computing software components. MoboLink also offers a set of RESTful API interfaces for developers to easily integrate MoboLink MDM function with corporate own IoT systems, so that unitech devices can be controlled and also allowing device data collection and data exchange across different systems.

Features

- Device Management
- Application and Firmware Management
- Backup Management
- Configuration Management
- Location Management
- Group Management
- Alert Notifications
- Logs and Reports
- Account Management
- Solution Management

- RESTful Device Management and Data Exchange APIs (Probe Data, X Data, Event, Messaging)



Kuang Chuan Dairy Co., Ltd.

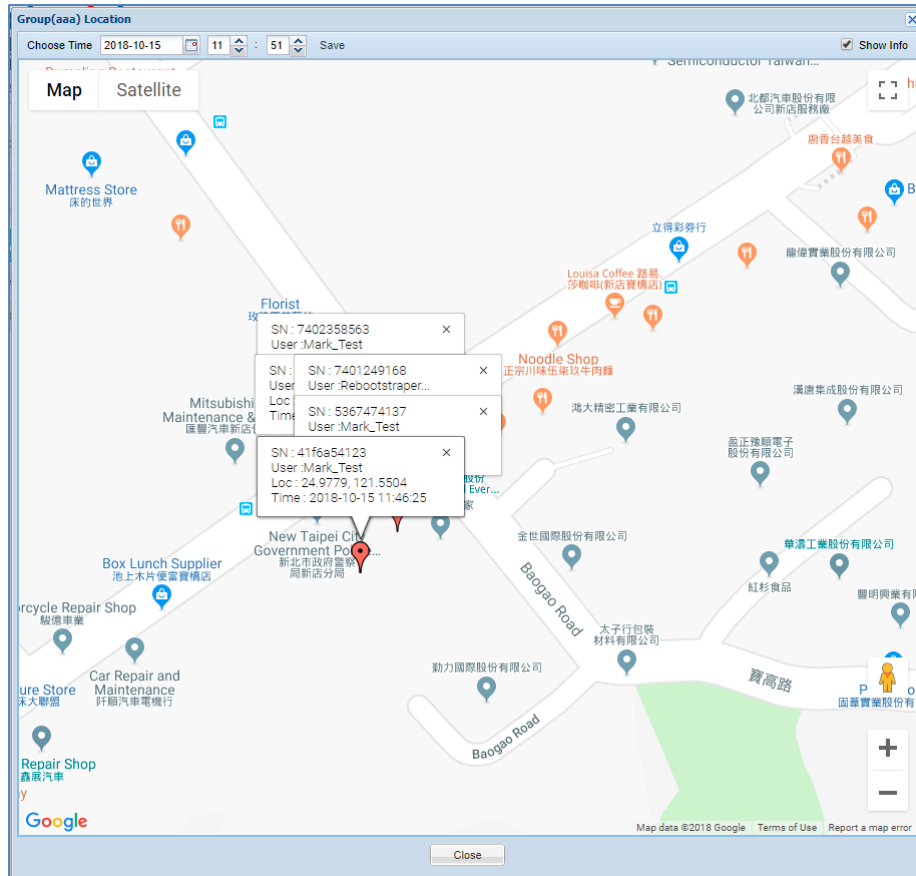
Starting out as a City God Temple-side vendor on Dihua Street, Kuang Chuan made its official entrance into the dairy sector in 1956 with only three cows. Over the last five decades, it has developed a healthful and tasty array of products through innovation in manufacturing technologies as well as packaging. Kuang Chuan sets the benchmark for Taiwan’s dairy industry, outdoing its peers in farmer support, manufacturing technologies and new product development.

KC spares no effort in investing in manufacturing equipment because they know it plays an enormous role in their top priority: product quality. As early as 1964, they introduced Taiwan’s first Ultra-high Temperature Sterilizer (UHT) from Japan and used it in combination with automatic glass bottle filling machines to ensure fresh, clean and delicious dairy products. In 1980 amid growing demand, the Dayuan plant was constructed. It is a world-class, cutting-edge aseptic beverage-making factory that dramatically increased their processing capacity while offering all-around consumer 100% protection. In 1983, they went on to adopt Tetra Pak King packaging solutions, a groundbreaking move for the Taiwanese dairy industry that substantially improved our footing in the market. The Chiayi plant, featuring state-of-the-art precision automation facilities, was inaugurated in 1991. In the same year, KC was named the leading Taiwanese milk brand in a consumer survey, a title they have

retained till this day. Recognized by food quality certification bodies at home and abroad for their unyielding pursuit of improvements, they conform to ISO 9001, ISO 22000 standards, HACCP, FDA requirements and other international criteria that vouch for quality!

KC has been trusted unitech devices in years to use its device for inventory and patrol goods. unitech has many device types which covers PDA and tablet, WinCE and Android operating system. KC has been used unitech PA600, PA692, and TB560, which total number more than 800 devices. Starting from 2018, KC decided to use MoboLink MDM solution to manage its TB560 devices. KC mostly uses MoboLink for its application management, device management and location management feature.

MoboLink application management functions, such as install app, activate app, inactive app, and delete app, and also remote desktop feature have been a great help for the inventory process. KC has developed its own app for the inventory stock checking, pricing, etc. They seldom release new version for the app with new features and bug fix. It will be a troublesome for the IT administration to collect all devices from each post only for the purpose to upgrade the app. Besides the warehouse size that is quite big, all of those devices were dispatched on several warehouses outside Taipei. Using MoboLink MDM solution, IT administrator can control apps, whether it is installing, upgrading, removing or even activate and deactivate from distant location. Beside the application management feature, KC also uses module on/off function of the device management feature to disable USB and camera to ensure the security of the data and no one can copy it through the USB. Moreover, with the remote desktop function supported by unitech devices, the maintenance and repair process can be done remotely and efficiently.



KC also benefits from MoboLink Location Management function. Since they need to manage hundreds of devices within several locations, sometimes they thought a device was lost, but turns out it is just simply misplaced to another warehouse. Using the Location Management feature, IT administration can check device location right away and save the troubles for looking the device.

Conclusion

Unitech always improves its products and tries to give a better solution for its customer. Through MoboLink solution, users can get benefits from cost saving by reducing the time needed for device application setup and repair mechanism from manual to remotely using MoboLink MDM solution.

To receive more information about MoboLink MDM and Data Exchange solutions please contact your unitech electronics local sales.